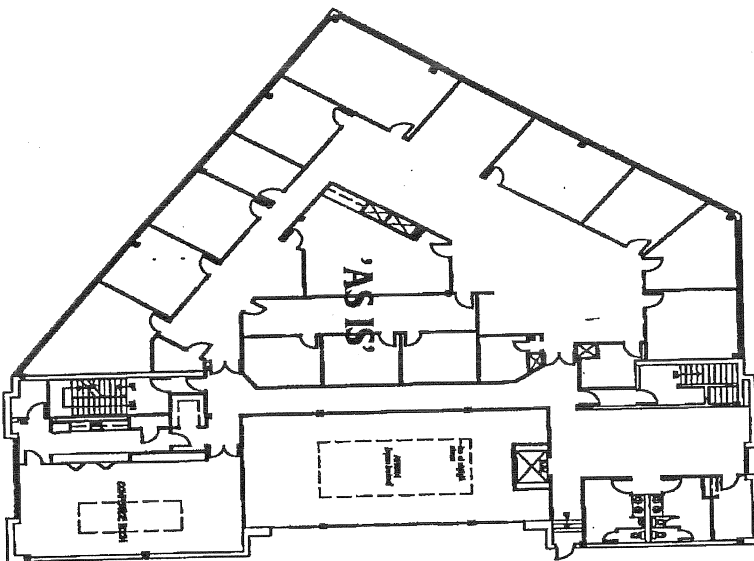


TEMPORARY PREMISES

FLOOR 3



# SCHOTT CORPORATION

SOUTH WESTCHESTER  
 EXECUTIVE PARK  
 3 ODELL PLAZA  
 FLOOR 2 AND 3  
 TEMPORARY PREMISES  
 LEASE  
 PLAN

**MACK-CALI**

Realty Corporation  
 100 CLAWSON ROAD, ELIZABETH, NJ 07208

15 AUG 2003  
 EXHIBIT 'A'



FLOOR 2

