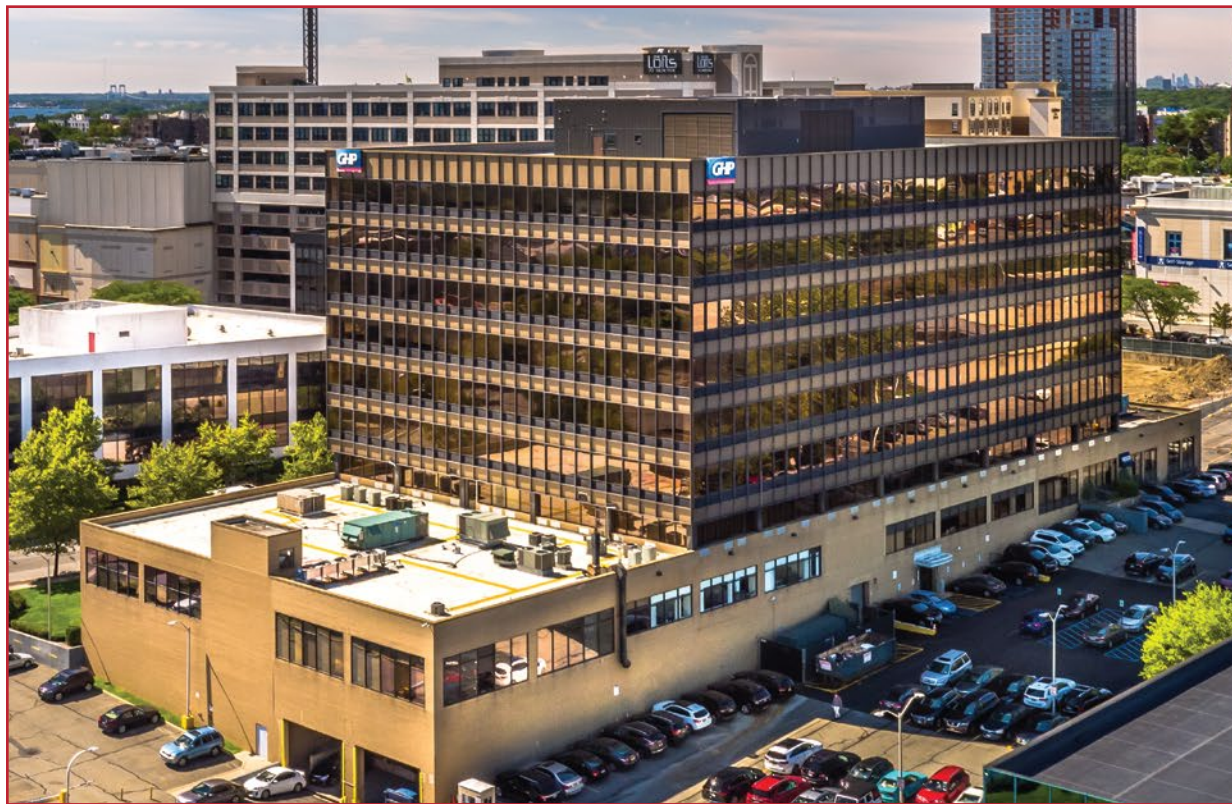


# OFFICE/MEDICAL SPACE AVAILABLE

145 Huguenot Street, New Rochelle, New York



**UNITS FROM 400 - 900 SQUARE FEET**



## **PROPERTY FEATURES**

- Class "A" Office Building
- Immediate Access to I-95
- On-site Employee & Visitor Parking
- Located in New Rochelle CBD
- Less Density than Urban Office Buildings
- On-site Concierge, Building Manager, Engineers, Food Service & Fitness Center
- Walking Distance to Metro-North & Amtrak Train Station
- Minutes to Local Shopping, Dining & Newly Constructed Housing



**Brendan Hickey**  
*bhickey@ghpoffice.com*

914.642.9300  
ghpoffice.com

**Rachel Greenspan**  
*rgreenspan@ghpoffice.com*

We Own. We Manage. We Lease.